

# FINSEAL Invisi WB



## DESCRIPTION

Finseal Invisi WB is a clear impregnating low VOC sealer that is designed to protect concrete, absorbent natural stone and masonry surfaces.

Finseal Invisi WB is a water-based formulation containing a fluoro-acrylic modified microemulsion that has good penetration and is fast drying. Treated substrates are UV stable, hydrophobic and resist staining from ingress of oils, salts, organic matter, food and beverages.

## USES

- Footpaths and public spaces
- Untreated masonry pavers and concrete
- Exposed architectural concrete
- Coloured, stencilled and screeded concrete
- Porous natural and artificial stone
- Alfresco dining areas
- Driveways and Carparks
- Pool concourse
- Natural and artificial stone
- Masonry paving
- Decorative concrete overlays
- Exposed architectural concrete
- Precast concrete panels

## FEATURES AND BENEFITS

- Significantly reduces water adsorption
- Significantly reduces oil adsorption
- Significantly reduces water-borne dirt accumulation
- Reduction of frost damage
- Significantly reduces moss, mildew and lichen growth
- Anti-graffiti properties
- Does not impart a "wet look" to treated surfaces or contribute to surface gloss
- Makes general cleaning and removal of chewing gum easier.
- Does not affect slip resistance of treated surfaces

## APPLICATION GUIDELINES

### Surface Preparation

Ensure substrate is clean, dust and stain free prior to application. Clean surface to remove any dirt, laitance, previous coatings or curing agents that may prevent penetration of the material.

The surface must be dry prior to application.

Confirm absorbency of surface with a light water spray, ensuring penetration into the surface is achieved.

It is recommended to undertake a test sample to confirm the suitability of the product for specific substrates and ensure desired results are achieved.

### Application Method

Slowly stir the material until thoroughly mixed; Using a low-pressure sprayer fitted with an adjustable spray tip, surface must be flooded at a sufficient rate ensuring to achieve full saturation. Substrates of greater porosity will benefit from a second application, wet on wet, to ensure penetration is achieved. The properties of the substrate such as porosity and profile will greatly influence the amount of material required.

## IMPORTANT

### Application Conditions / Notes

Substrates should not be frozen or freeze prior to full cure.

Application will not repair damaged surfaces and cracks.

Finseal Invisi WB is NOT AFTER TRADES FRIENDLY and should not be used if the surface is to have line-marking, etc. applied. Do not use as a primer and any application of topical coatings will cause delamination.

Protect glass, aluminium and other sensitive materials from exposure as the product will cause etching of these materials.

Application using high pressure spray units should be avoided as this will reduce the amount of material on the substrate.

## MAINTENANCE

Use in exterior and public areas should have a regular cleaning and maintenance programme implemented, including re-application as required depending on use and exposure to traffic.

Do not use acidic cleaners to maintain treated floors. Although Finseal Invisi WB will improve the stain resistance of concrete; some acid concentrates and acidic foods may etch and leave a residual stain if left on the surface.

Clean up all spills quickly to minimise any possible damage. Wine spills should be diluted with water and removed by absorbing into with a cloth, no longer than 8 hours after the spill.

Use only a pH neutral detergent in suitable dilution and warm (not hot) water to remove any spills from the treated surface. The use of strong solvents, solvent based cleaners or highly alkaline or acidic detergents may compromise the treatment.

## ESTIMATING DATA

Application rate will vary from 1 - 10m<sup>2</sup>/L depending on the material porosity and application method.

Dense surfaces approx. 5-10m<sup>2</sup>/L

Porous surfaces up to 1-2m<sup>2</sup>/L

Substrate saturation is essential to achieve maximum result.

## CURING TIME

24-36 hours to full cure at 25°C. 6 hours of free drying time prior to rain is required.

## VOC COMPLIANCE

Low VOC <50g/L

## CLEAN UP

Equipment should be washed in water while wet or solvent-based cleaner when dry.

## PACKAGING

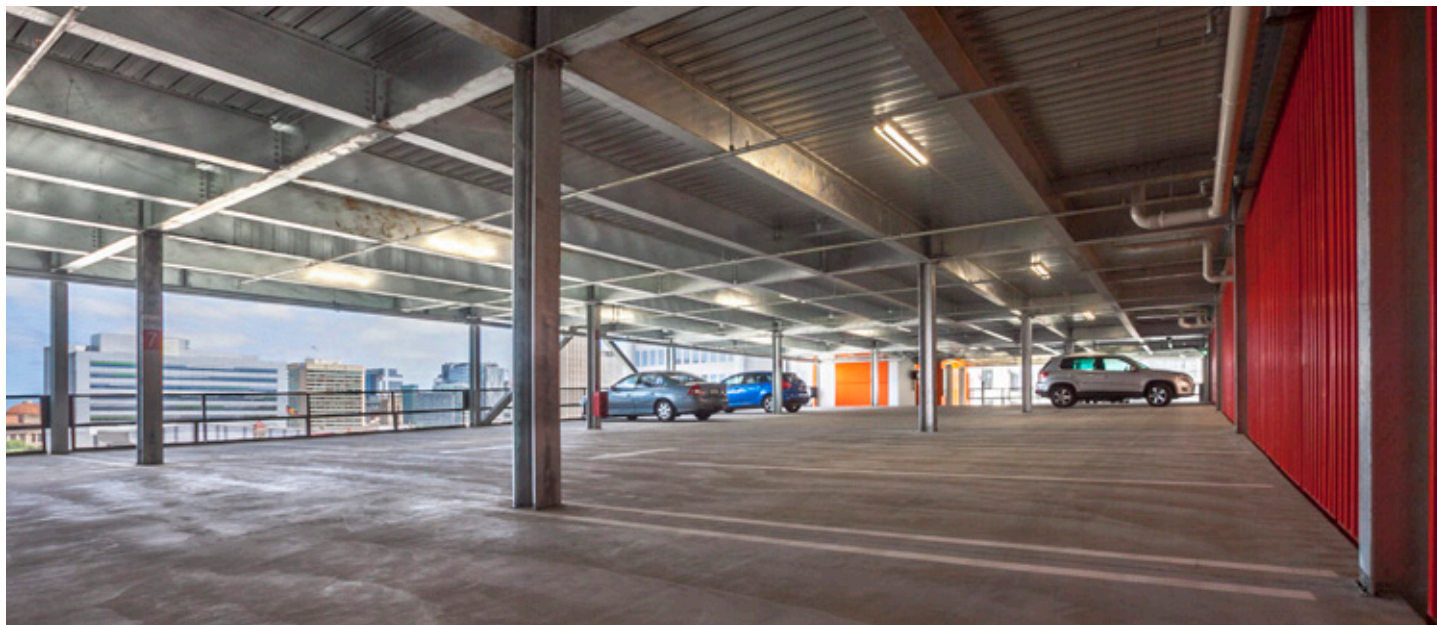
20L metal pail

## SHELF LIFE

1 year in unopened, factory sealed container. Safely stored at temperatures between 5°C-35°C.

## SAFETY PRECAUTIONS

Always wear adequate personal protection during use including gloves, eye protection, overalls and appropriate mask. Apply in adequate ventilation. Refer to Material Safety Data Sheet for further safety information.



### DISCLAIMER / STATEMENT OF RESPONSIBILITY

Purchase or use of the product referred above ('the Product') constitutes acceptance of these terms. Any information provided by Vulk Pty Ltd ('Vulk') is of a general nature and should not be taken as advice and is, to the extent permitted by law, provided without warranty as to the accuracy, reliability or completeness of that information. Further, no warranty is provided in respect to the quality, suitability or fitness for purpose of the Product. Expert advice should be taken in respect to any use of the Product.

So far as is permitted by law, any party purchasing or using the Product indemnifies Vulk against and releases Vulk from any claim, liability, loss, cost or similar directly or indirectly arising out of the supply or use of the Product or this technical data sheet. Vulk's liability to any party is limited to cost of replacement or repair of the Product and is reduced proportionately to the extent that an act or omission of any other party contributes to the liability.

**VULK.COM.AU**

enquiries@vulk.com.au

5 Piping Lane Lonsdale SA 5160

Phone: 08 7120 6955

**VULK**

AUSTRALIA'S LEADING CONCRETE FLOORING CENTRE

 **MIRAFLOOR**

 **FINDURO**

 **AARDCURE**

VULK TDS Issue August 2019 Ver FSINVWB.001